

THIS IS NOT AN OFFICIAL MAP  
FOR ASSESSMENT PURPOSES ONLY

FILKINS TRACT  
BK 2 PG. 30  
(POR. SW 1/4 SEC 20, T. 16N., R. 1W., H.B. 8M.)

120-179-002-000

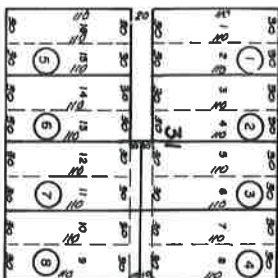
120-17

0348  
1078  
1228  
1149

1" = N-100'

(16)

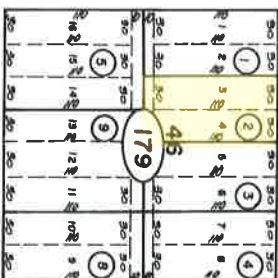
MCNAMARA



(13)

ST. 8

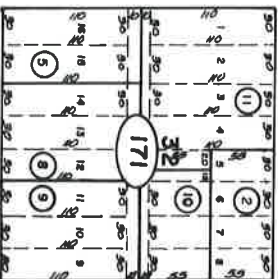
KELLER



(12)

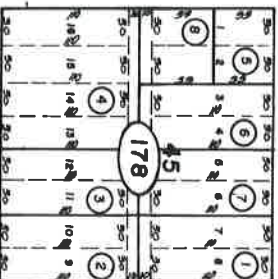
ST. 8

MURPHY



(171)

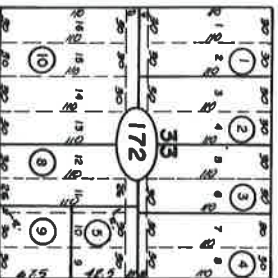
ST. 8



(178)

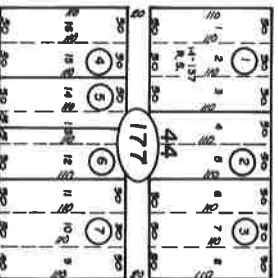
ST. 8

HUMBOLDT



(172)

ST. 8

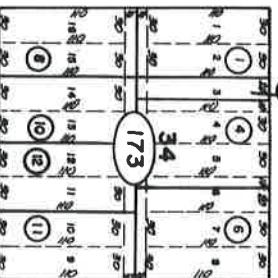


(177)

(18)

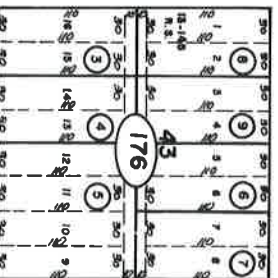
ST. 8

ST. 8



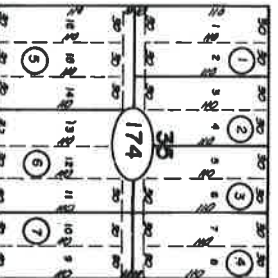
(173)

ST. 8



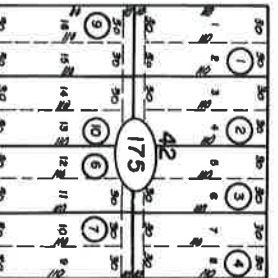
(176)

FRESNO



(174)

ST. 8



(175)

AVE. 8

AVE. 8

AVE. 8

EL DORADO

ST. 8

(23)

(22)