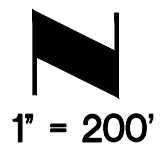
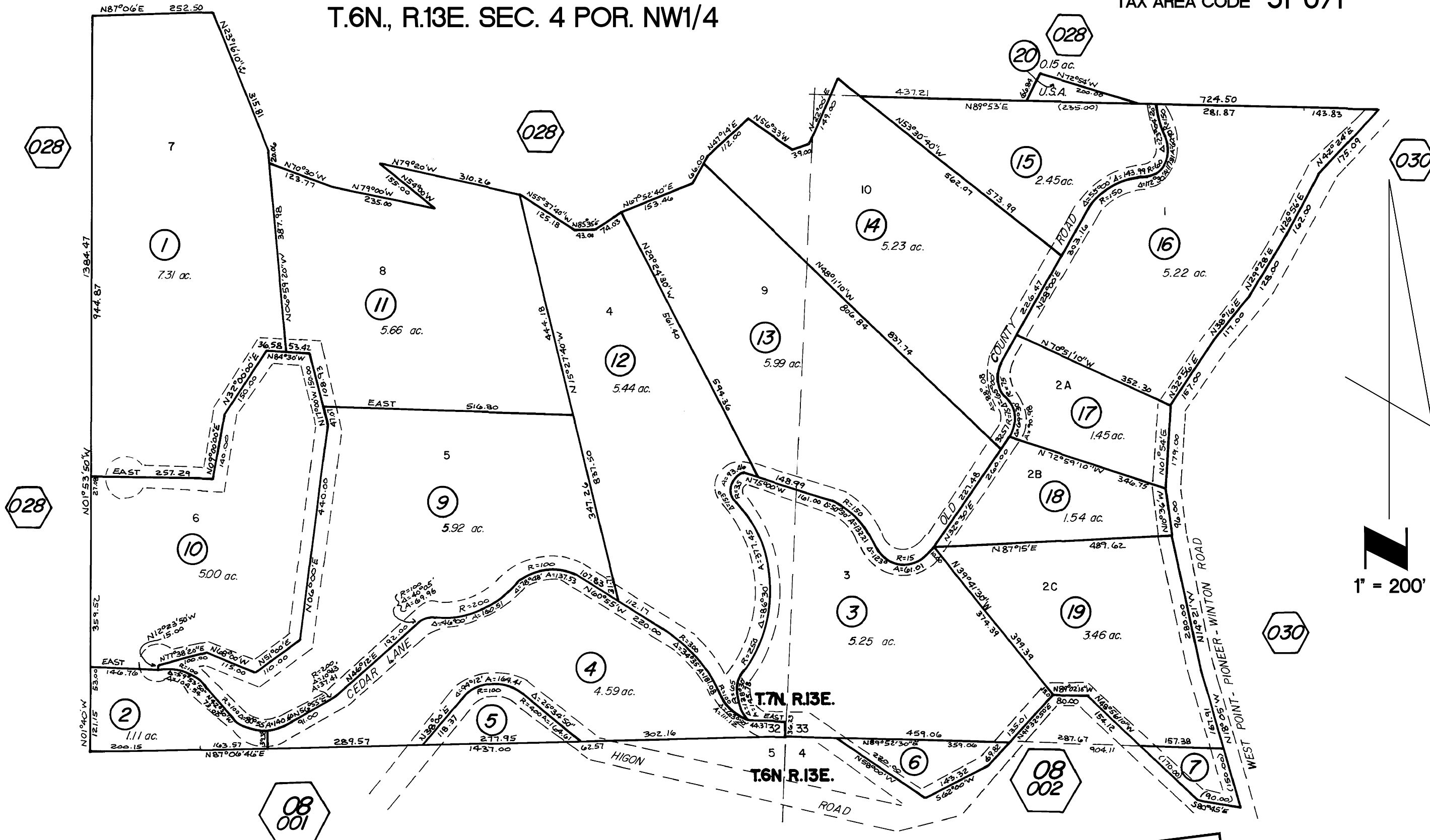


T.7N., R.13E. SEC.32 POR. SE1/4, SEC. 33 POR. SW1/4
T.6N., R.13E. SEC. 4 POR. NW1/4

TAX AREA CODE 51-071



R.O.S. 3-3, 3-45, 6-48 (CAMELOT)

REV. 5 06/16/1976

ASSESSMENT PURPOSES ONLY
 NO LIABILITY IS ASSUMED FOR THE
 ACCURACY OF THE DATA DELINEATED HEREON

CALAVERAS COUNTY
 ASSESSOR'S MAPS
 BOOK 04 PAGE 031