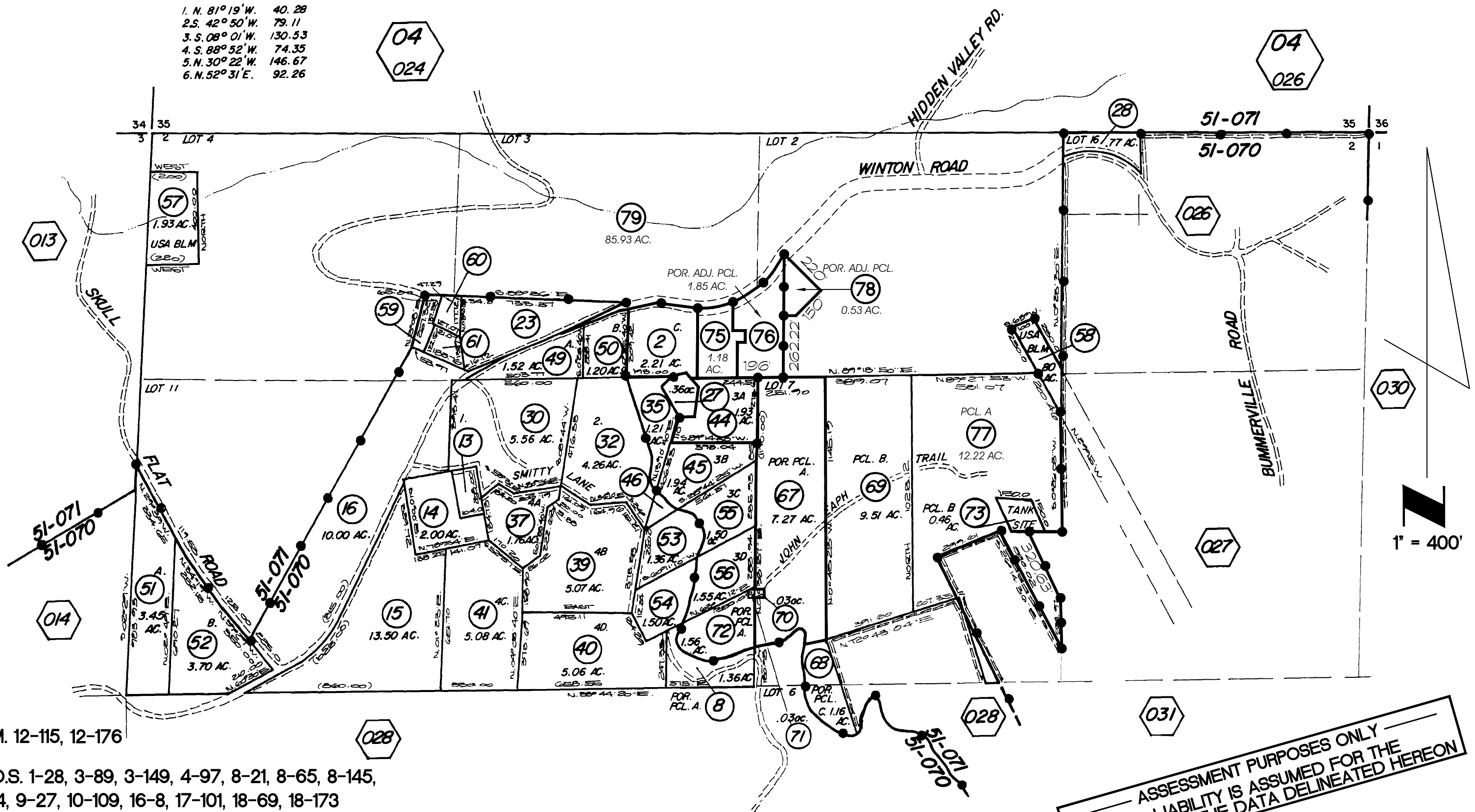


- 1. N. 81° 19' W. 40.28
- 2. S. 42° 50' W. 79.11
- 3. S. 08° 01' W. 130.53
- 4. S. 88° 52' W. 74.35
- 5. N. 30° 22' W. 146.67
- 6. N. 52° 31' E. 92.26



P.M. 12-115, 12-176

R.O.S. 1-28, 3-89, 3-149, 4-97, 8-21, 8-65, 8-145,  
9-4, 9-27, 10-109, 16-8, 17-101, 18-69, 18-173

U.P.M. W.P.I.D.

REV. 33 04/30/2014

ASSESSMENT PURPOSES ONLY  
 NO LIABILITY IS ASSUMED FOR THE  
 ACCURACY OF THE DATA DELINEATED HEREON

CALAVERAS COUNTY  
 ASSESSOR'S MAPS  
 BOOK 08 PAGE 025