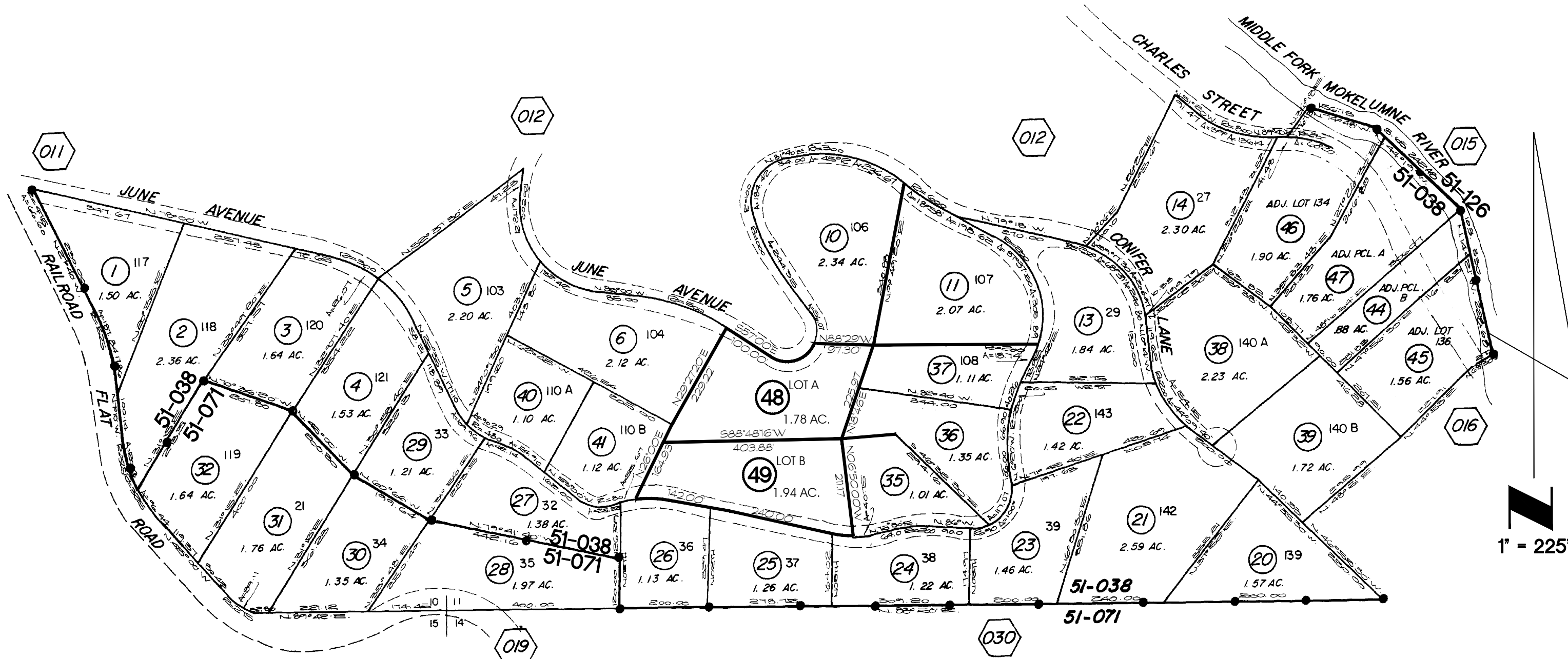


T.6N., R.13E. SEC. 10 POR. SE 1/4 OF SW 1/4
SEC. 11 POR. SW 1/4 OF SW 1/4

TAX AREA CODE 51-126, 51-038
51-071



LYNN PARK ACRES

R.O.S. 7-53, 8-62, 17-83, 17-52, 19-89
P.M. 6-35
S.M. F-519

REV. 14 02/12/2001

ASSESSMENT PURPOSES ONLY
NO LIABILITY IS ASSUMED FOR THE
ACCURACY OF THE DATA DELINEATED HEREON

CALAVERAS COUNTY
ASSESSOR'S MAPS
BOOK 10 PAGE 013