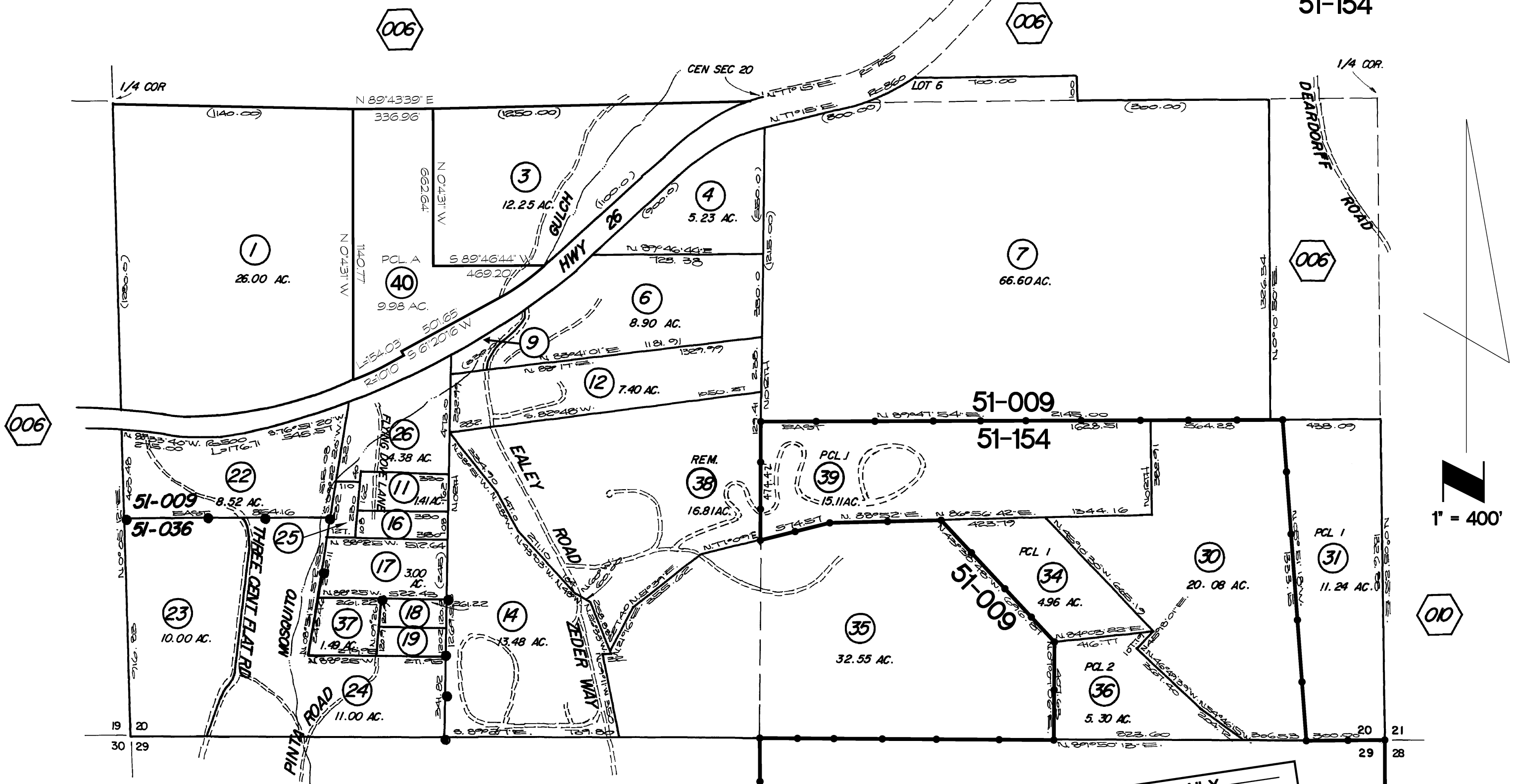


T.6N., R13E. SEC 20 S1/2

TAX AREA CODE 51-009,51-036 40
51-154



P.M. 3-180,5-131,8-45,12-123,
 R.O.S. 1-123,3-139,8-56,10-165,10-169,12-45,25-12
 S.M. F-44,F-563
 REV. 20 07/08/2021

ASSESSMENT PURPOSES ONLY
 NO LIABILITY IS ASSUMED FOR THE
 ACCURACY OF THE DATA DELINEATED HEREON

CALAVERAS COUNTY
 ASSESSOR'S MAPS
 BOOK 12 PAGE 007