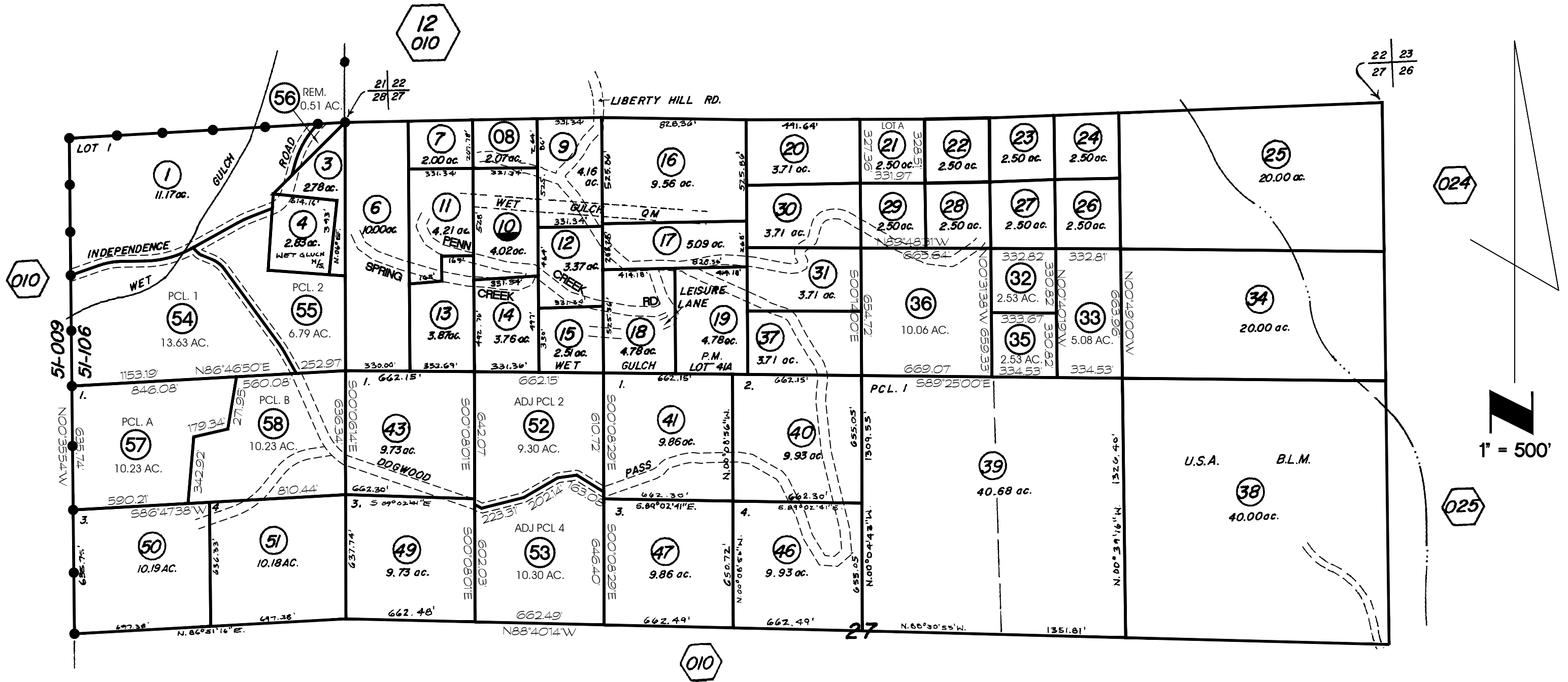


T.6N. R.13., M.D.M. SEC.28 POR. E1/2 OF NE1/4  
SEC.27 N1/2

TAX AREA CODE 51-106



R.O.S. 2-190, 4-174, 9-46, 10-194, 16-84, 19-33, 19-64, 20-179, 20-189, 21-138,

P.M. 1-36, 1-137, 2-60, 6-63, 2-75, 7-113

REV. 15 09/25/2008

FOR MINERAL RIGHTS SEE PAGE 430

ASSESSMENT PURPOSES ONLY  
NO LIABILITY IS ASSUMED FOR THE  
ACCURACY OF THE DATA DELINEATED HEREON

CALAVERAS COUNTY  
ASSESSOR'S MAPS  
BOOK 14 PAGE 030