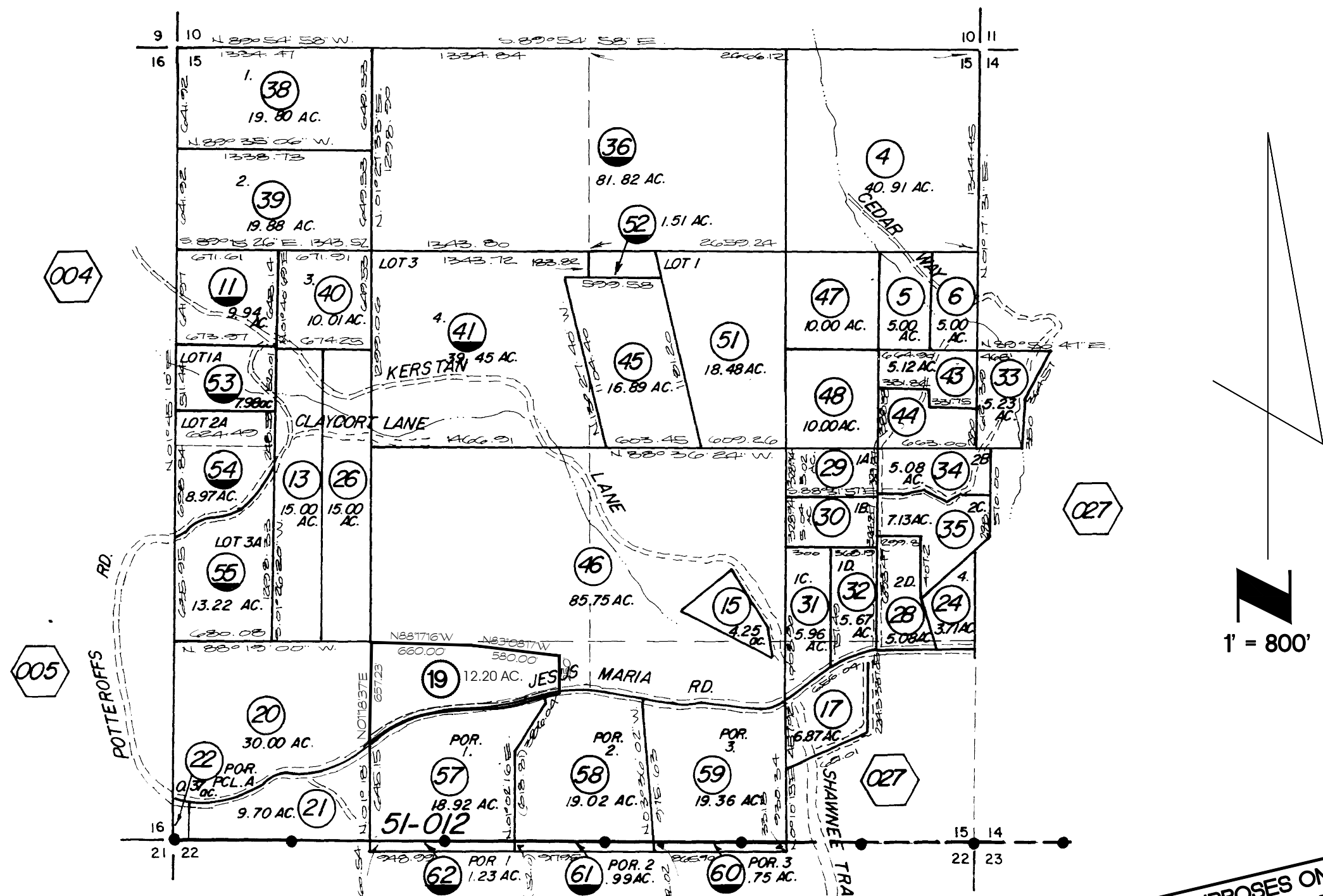


T.5N., R.13E. SEC.15

TAX AREA CODE 51-006,51-012

028



R.O.S. 7-34, 7-128, 8-58, 8-94, 8-157, 8-159, 9-128, 12-131, 13-110, 15-31, 15-86, 15-187, 24-13

P. M. 2-91, 2-152, 3-41, 3-135

REV. 24 07/02/2018

51-006

FOR MINERAL RIGHTS SEE PAGE 413

ASSESSMENT PURPOSES ONLY
NO LIABILITY IS ASSUMED FOR THE
ACCURACY OF THE DATA DELINEATED HEREON

CALAVERAS COUNTY
ASSESSOR'S MAPS
BOOK 20 PAGE 013