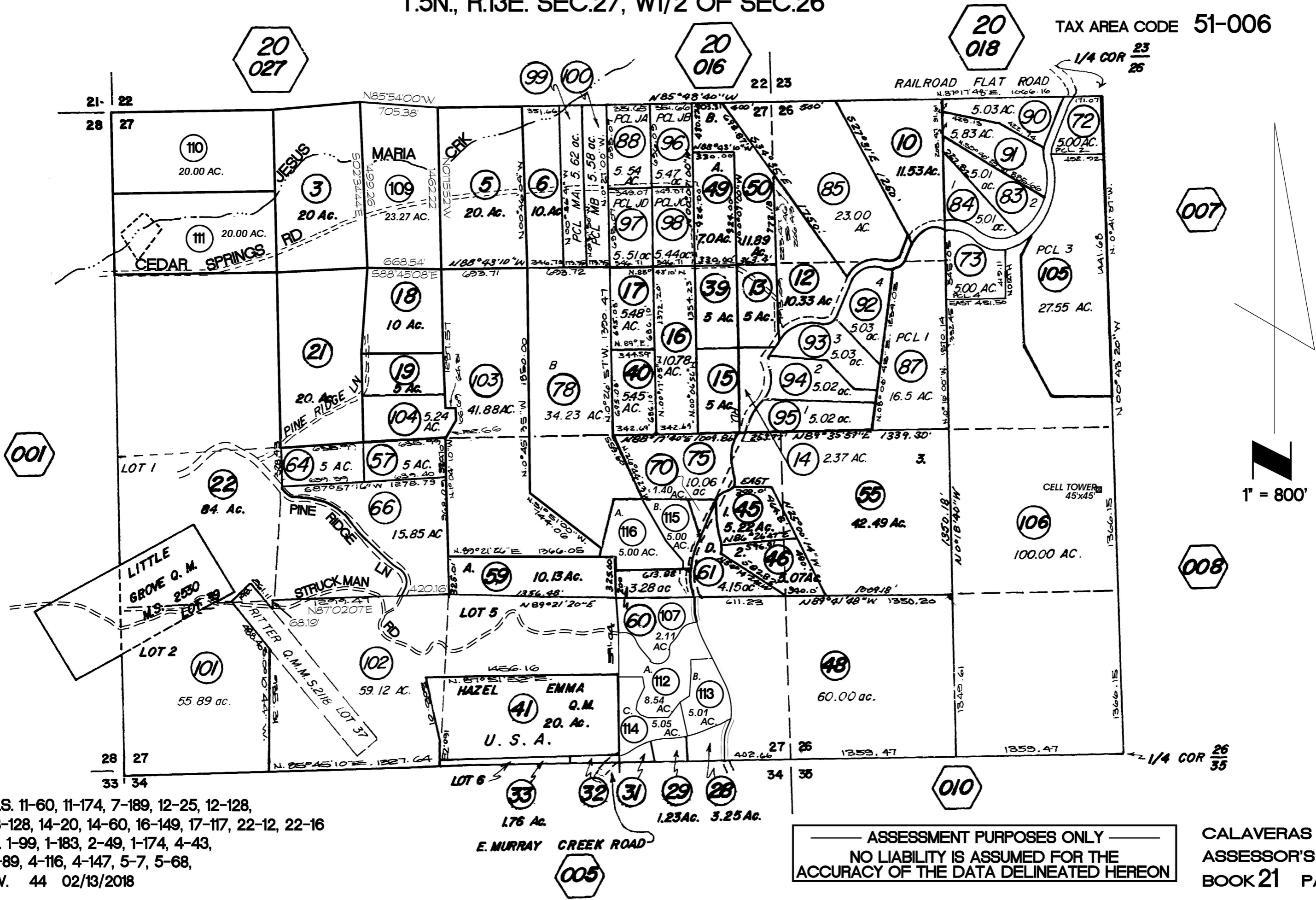


T.5N., R.13E. SEC.27, W1/2 OF SEC.26

TAX AREA CODE 51-006



R.O.S. 11-60, 11-174, 7-189, 12-25, 12-128,
 13-128, 14-20, 14-60, 16-149, 17-117, 22-12, 22-16
 P.M. 1-99, 1-183, 2-49, 1-174, 4-43,
 4-89, 4-116, 4-147, 5-7, 5-68,
 REV. 44 02/13/2018

ASSESSMENT PURPOSES ONLY
 NO LIABILITY IS ASSUMED FOR THE
 ACCURACY OF THE DATA DELINEATED HEREON

CALAVERAS COUNTY
 ASSESSOR'S MAPS
 BOOK 21 PAGE 004