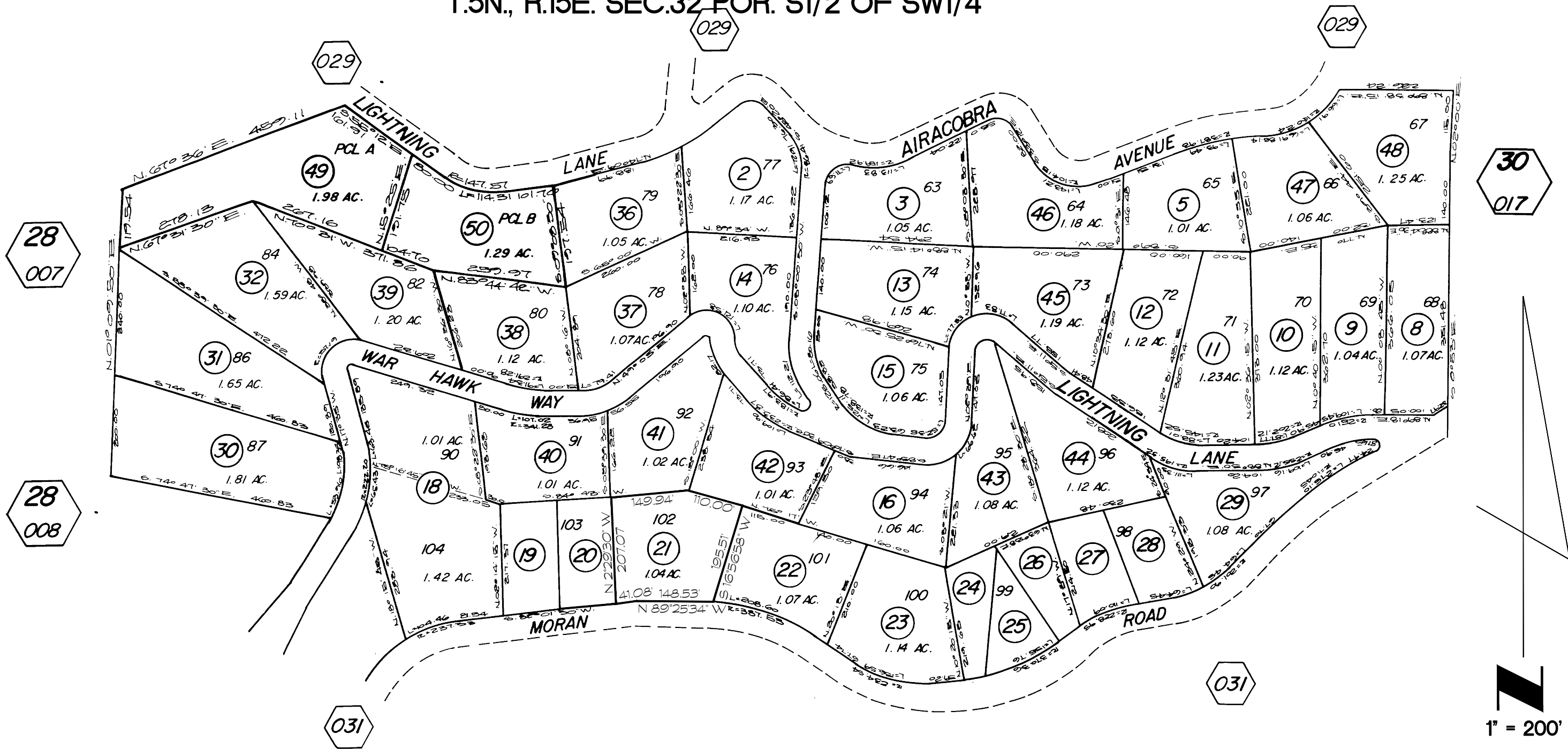


T.4N., R.15E. SEC.5 POR. N1/2 OF NW1/4
T.5N., R.15E. SEC.32 POR. S1/2 OF SW1/4

TAX AREA CODE 79-018



R.O.S. 1-12, 1-13, 1-14, 11-93, 21-101,

P.M. 8-152

REV. 12 03/11/2008

FLY-IN ACRES 1

ASSESSMENT PURPOSES ONLY
NO LIABILITY IS ASSUMED FOR THE
ACCURACY OF THE DATA DELINEATED HEREON

CALAVERAS COUNTY
ASSESSOR'S MAPS
BOOK 24 PAGE 030