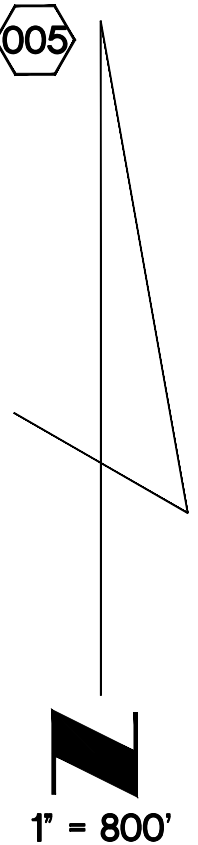
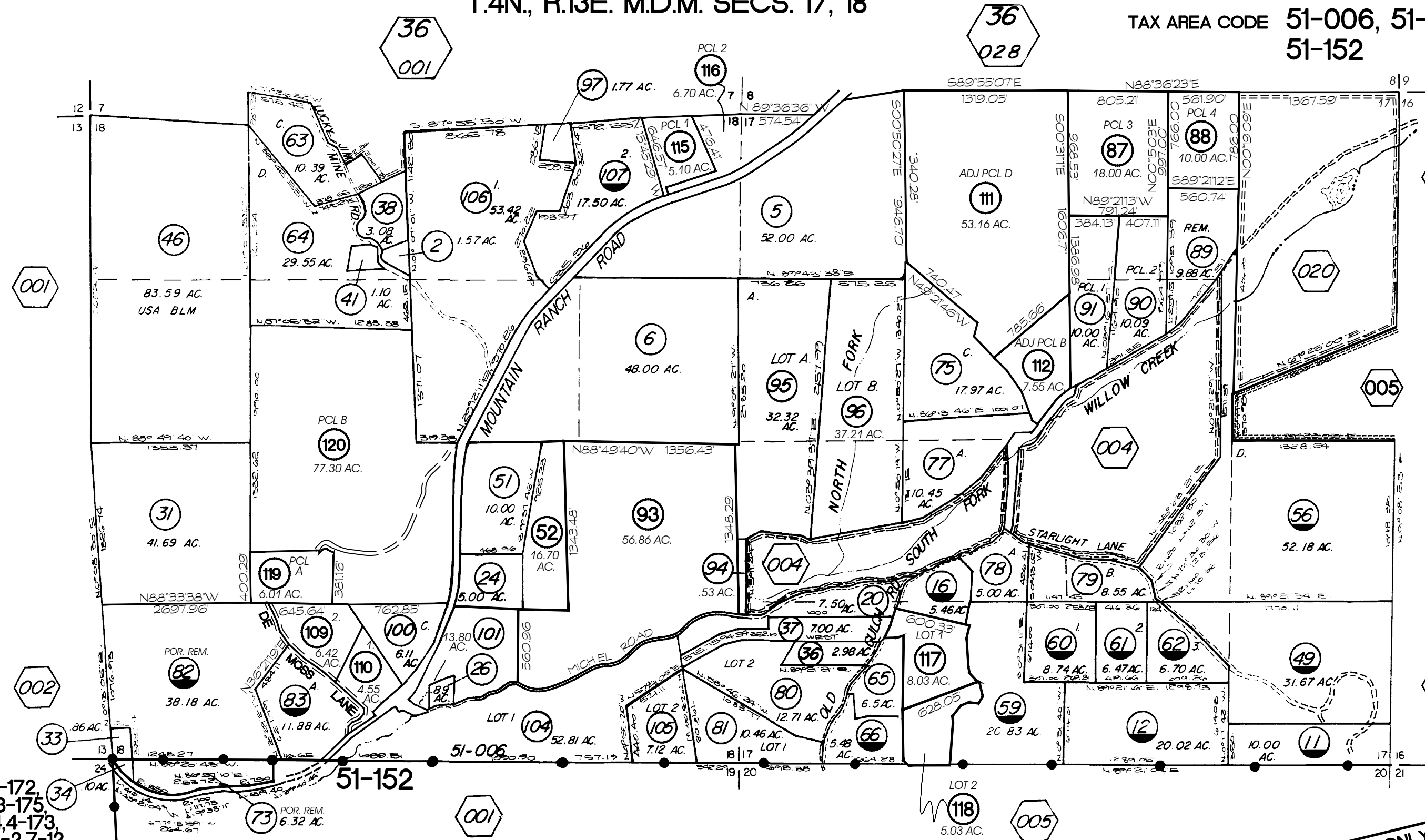


T.4N., R.13E. M.D.M. SECS. 17, 18

TAX AREA CODE 51-006, 51-046, 51-152



P.M. 1-189, 2-172, 3-175, 4-74, 2-112, 3-175, 4-130, 4-154, 4-173, 4-173, 5-2, 6-2, 7-12, 7-97, 9-140, 9-166, 12-100,

R.O.S. 6-62, 10-93, 10-167, 12-88, 14-135, 15-69, 15-125, 17-189, 17-181, 19-35, 20-122, 22-40, 22-32, 23-24, 24-48

FOR MINERAL RIGHTS SEE PAGE 403
FOR WATER RIGHTS SEE PAGE 503

ASSESSMENT PURPOSES ONLY
NO LIABILITY IS ASSUMED FOR THE
ACCURACY OF THE DATA DELINEATED HEREON