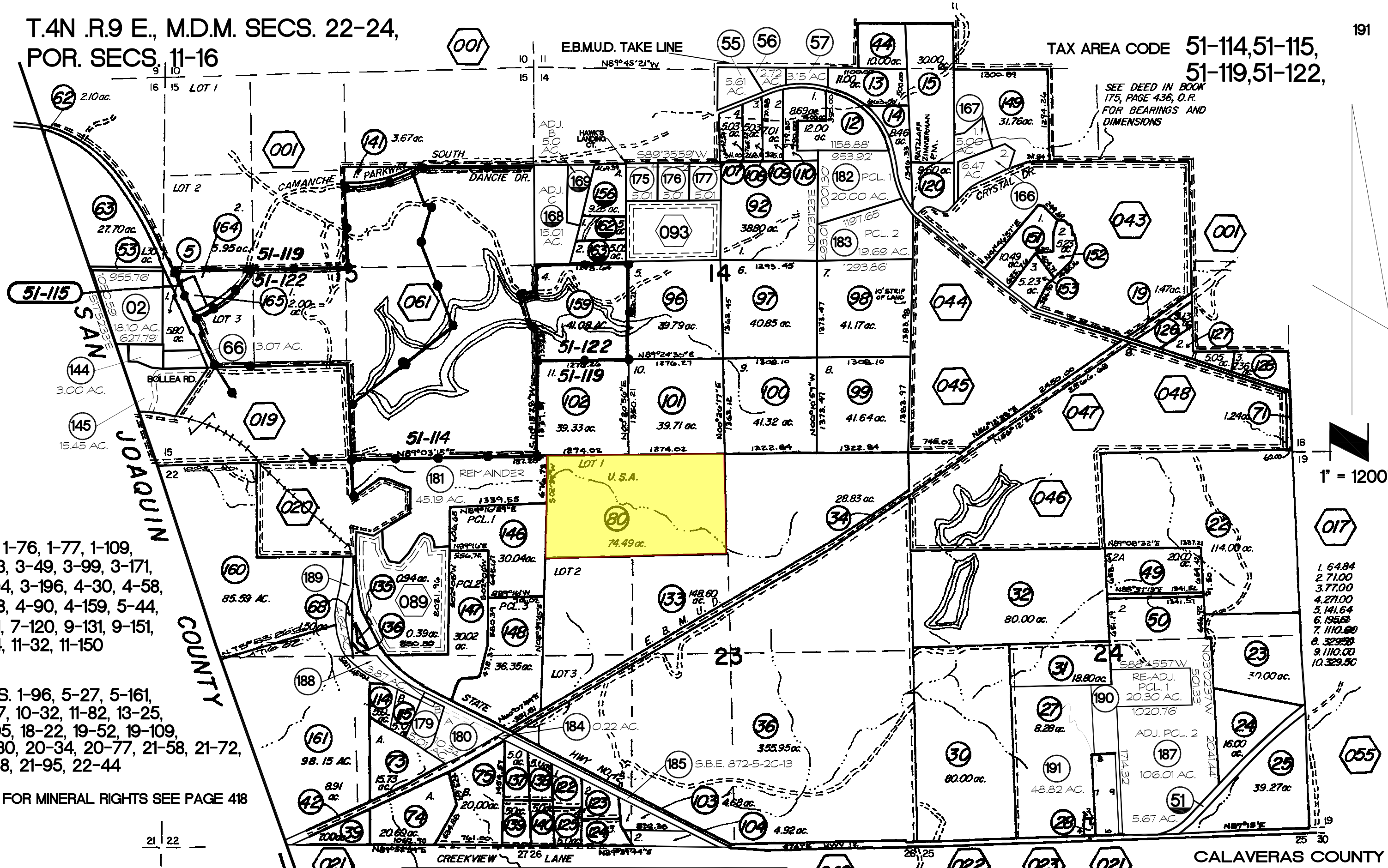


T.4N R.9 E., M.D.M. SECS. 22-24,
 POR. SECS. 11-16

TAX AREA CODE 51-114, 51-115,
 51-119, 51-122,

SEE DEED IN BOOK
 175, PAGE 436, D.R.
 FOR BEARINGS AND
 DIMENSIONS



P.M. 1-76, 1-77, 1-109,
 2-73, 3-49, 3-99, 3-171,
 3-194, 3-196, 4-30, 4-58,
 4-78, 4-90, 4-159, 5-44,
 7-51, 7-120, 9-131, 9-151,
 10-4, 11-32, 11-150

R.O.S. 1-96, 5-27, 5-161,
 6-57, 10-32, 11-82, 13-25,
 15-95, 18-22, 19-52, 19-109,
 19-130, 20-34, 20-77, 21-58, 21-72,
 21-88, 21-95, 22-44

FOR MINERAL RIGHTS SEE PAGE 418

1" = 1200'

- 1. 64.84
- 2. 71.00
- 3. 77.00
- 4. 271.00
- 5. 141.64
- 6. 195.68
- 7. 1110.00
- 8. 329.50
- 9. 1110.00
- 10. 329.50

ASSESSMENT PURPOSES ONLY
 NO LIABILITY IS ASSUMED FOR THE
 ACCURACY OF THE DATA DELINEATED HEREON